

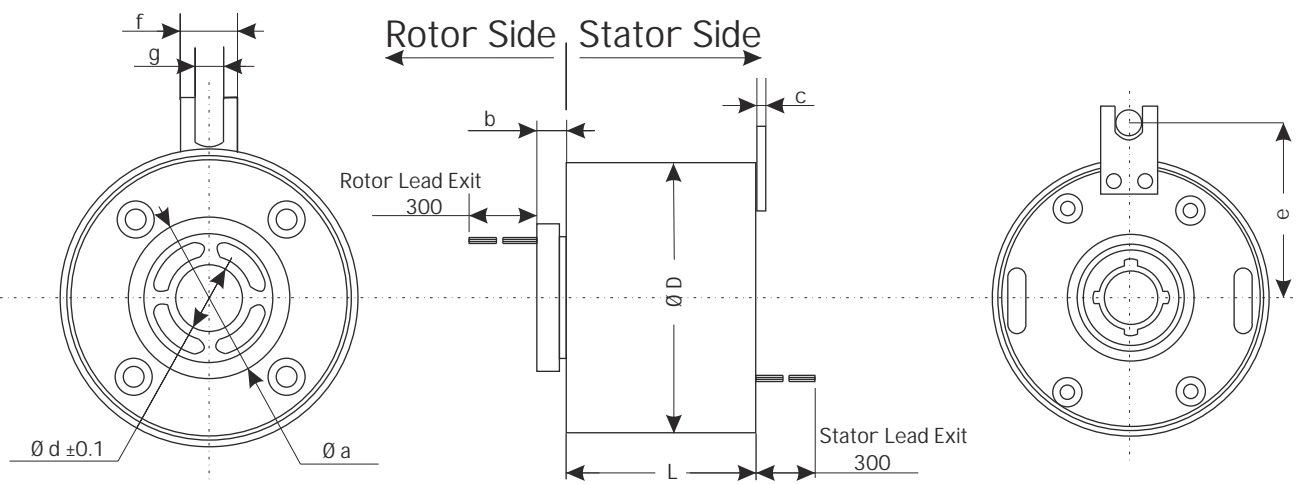


Slip Rings

catalog & maintenance

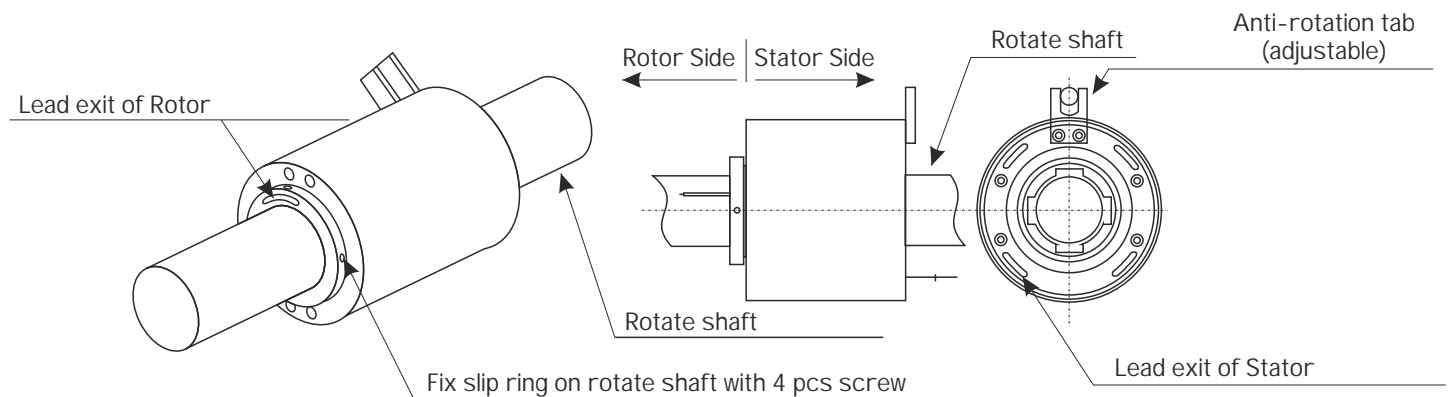
Through Bore Series (KYH)

Model	Contacts	Current/ Voltage [A]/400V	Speed [rpm]	Dimensions [mm]											
				D	d	L				a	b	c	e	f	g
						6 contacts	12 contacts	18 contacts	24 contacts						
KYH12		5		55,0	12,7	35,0	48,8	62,6	76,4	30,0	6,2	2,0	32,5	12,0	6,0
		10				38,0	54,8	71,6	88,4						
KYH25		5		86,0	25,4	43,5	62,7	81,9	101,1	50,0	8,7	4,0	58,0	19,5	9,5
		10				47,7	71,1	94,5	117,9						
		15				52,5	80,7	108,9	137,1						
KYH38		5		99,0	38,1	44,0	63,8	83,6	103,4	60,0	8,7	4,0	62,4	19,5	9,5
		10				48,2	72,2	96,2	120,2						
		15				53,0	81,8	110,6	139,4						
KYH50		5		119,0	50,0	50,0	69,8	89,6	109,4	75,0	8,7	4,0	76,0	19,5	9,5
		10				54,2	78,2	102,2	126,2						
		15				59,0	87,8	116,6	145,4						
KYH60				135,0	60,0	6 contacts	12 contacts	18 contacts	24 contacts	85,0	11,0	3,0	74,5	19,0	9,5
		5				62,5	77,5	92,5	107,5						
		10-20				77,5	107,5	137,5	167,5						
						30 contacts	36 contacts	42 contacts	48 contacts						
		5				122,5	137,5	152,5	167,5						
		10-20				197,5	227,5	257,5	287,5						
KYH70	6-48		0-300	155,0	70,0	6 contacts	12 contacts	18 contacts	24 contacts	89,5	11,5	3,0	83,25	19,0	9,5
		5				65,8	80,8	95,8	110,8						
		10-20				80,8	110,8	140,8	170,8						
						30 contacts	36 contacts	42 contacts	48 contacts						
		5				125,8	140,8	155,8	170,8						
		10-20				200,8	230,8	260,8	290,8						
KYH80				180,0	80,0	6 contacts	12 contacts	18 contacts	24 contacts	109,0	12,0	5,0	100,5	32,0	12,8
		5				73,5	88,5	103,5	118,5						
		10-20				88,5	118,5	148,5	178,5						
						30 contacts	36 contacts	42 contacts	48 contacts						
		5				133,5	148,5	163,5	178,5						
		10-20				218,5	248,5	278,5	308,5						
KYH90				190,0	90,0	6 contacts	12 contacts	18 contacts	24 contacts	119,0	12,0	5,0	109,0	32,0	12,8
		5				73,5	88,5	103,5	118,5						
		10-20				88,5	118,5	148,5	178,5						
						30 contacts	36 contacts	42 contacts	48 contacts						
		5				133,5	148,5	163,5	178,5						
		10-20				218,5	248,5	278,5	308,5						
KYH100				203,0	100,0	6 contacts	12 contacts	18 contacts	24 contacts	129,0	12,0	5,0	115,0	32,0	12,8
		5-20				93,5	125,0	156,5	188,0						
						30 contacts	36 contacts	42 contacts	48 contacts						
		5-20				219,5	251,0	282,5	314,0						



This units can be used in any electromechanical system that requires unrestrained, continuous rotation while transferring power or data from a stationary to a rotating structure. It's also called a rotary electrical interface, commutator, collector, swivel or an electrical rotary joint. It can improve electromechanical capability, simplify system design, eliminate possible damage while rotation. It's the key apparatus of various precision rotary worktable, electric test instrument, manufacture and process control instrument. The KYH series provide an economical, readily available solution when a compact through-bore configuration is required. This units provides a 12.7mm to 100mm, through-bore for routing hydraulic or pneumatic lines and a compact outside diameter for minimal space applications. This design features long life, fiber brush contact technology for ultimate performance in many challenging applications. Fiber brushes do not require lubrication and produce virtually no wear debris, for maintenance free, life time operation.

Number of Circuits	2 - 48 (or more)
Rotary Speed	0 - 300rpm
Voltage Rate	400 VAC/DC
Current Rate	2A, 5A, 10A, 15A, 20A per circuit
Temperature	-20 to +80 °C
Contact material	Precious metal
Lead Size	AWG22(5A), AWG17(10A), AWG14(15A), AWG12(20A) UL Teflon®
Lead Lengths	min. 300mm
Torque Force	Approx. 50.0 cmg per circuit
Noise	≤10mΩ



Guide for correct using and installation

Shaft installation:

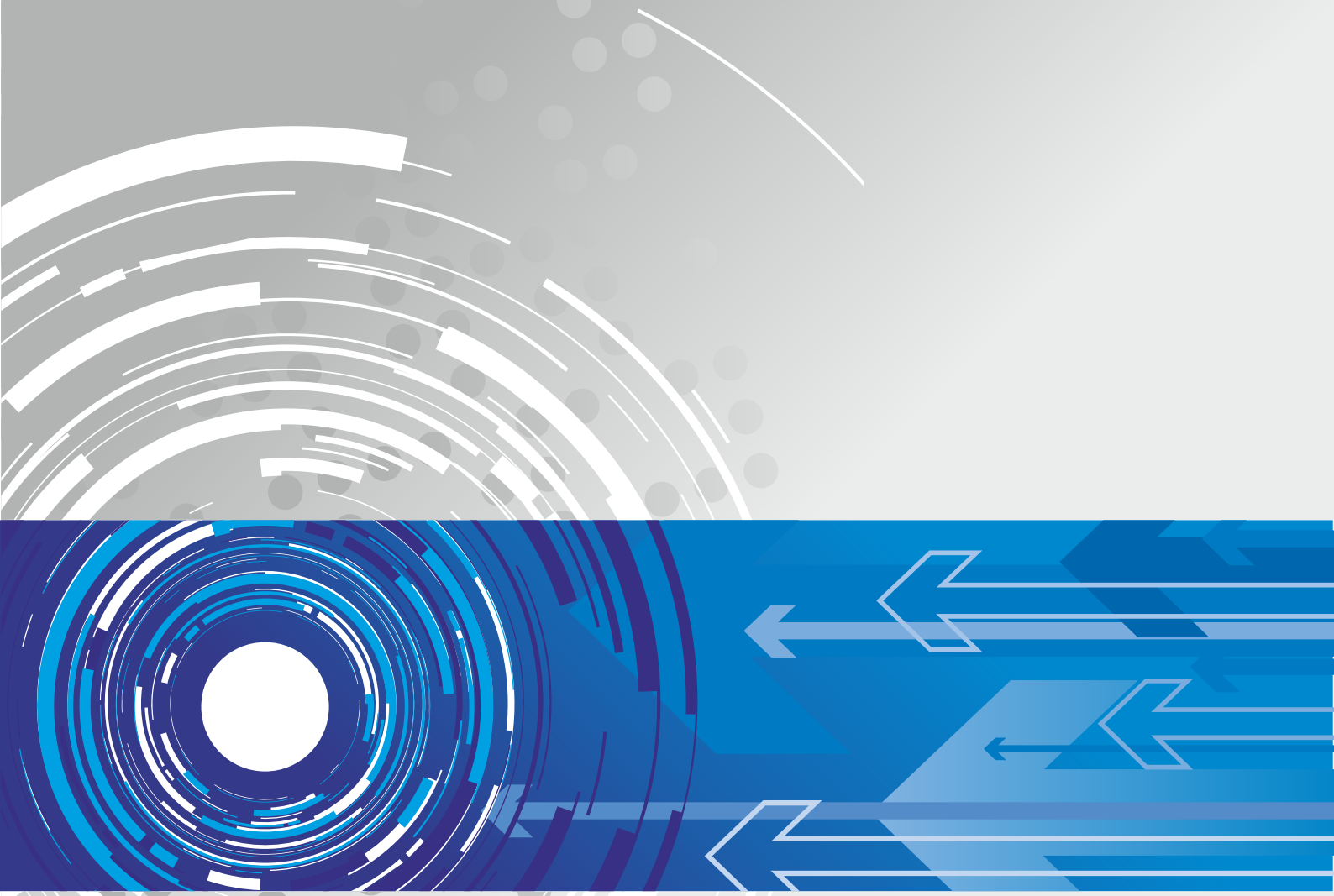
1. Fit slip ring at correct position and lock the matched screw tightly towards shaft. The max torque: 25 lb-in (no more than).
2. Line the lead wires and make necessary connects, make the slip ring rotate freely and make sure no encumbrance from lead wire. Lead wire can not be curved by oppressed, or accidents will occur caused by break off of lead wire.
3. Fit the anti-rotation tab with a screw (max dia: 5/16).

Part of flange:

1. Set the installation bores on flange and lock tightly washer and screw.
2. Line the lead wires and make necessary connects, make sure the free rotation of slip ring can cumbered by lead wires.
3. Fit the anti-rotation tab with a screw (max dia: 5/16).

Warring:

As there maybe machanical tolerance between products and application of user, it is not recommended to fit by force on both ends of slip ring (such as lock tightly rotor or stator cause no clearance while rotation), or it will shorten the operating life of slip ring.



Check other Slip Rings

Standard Series KYC

Miniature Series KYM

HD Series KYR

Detachable Series KYS

High Current Series FS



DISTRIBUTOR/AGENT